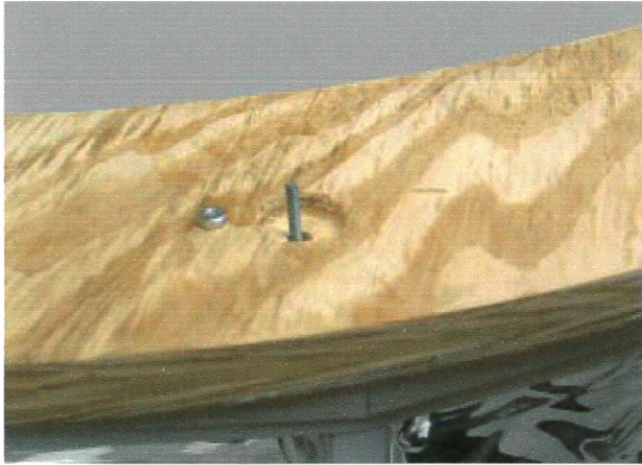


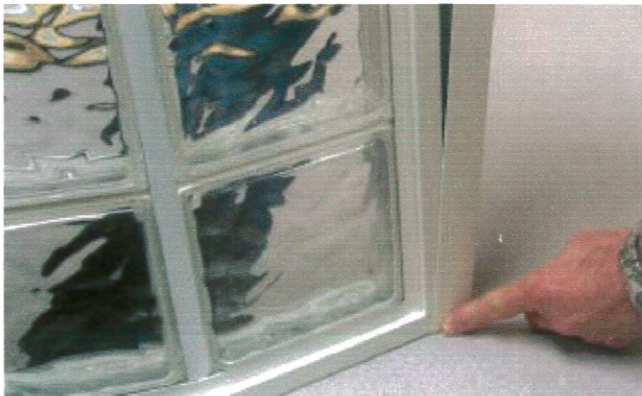
# Radius Wall Installation Instructions



1. Remove the radius wall from the pallet and move it near the location where it is to be installed. Remove the plywood cap and base. The plywood is held in place with nuts attached to all-thread that extends from the base to the cap. **DO NOT REMOVE THE ALL-THREAD**, it needs to remain in the wall to help hold the top and bottom frames to the block.



2. Cut the all-thread flush with the top and bottom of the wall.



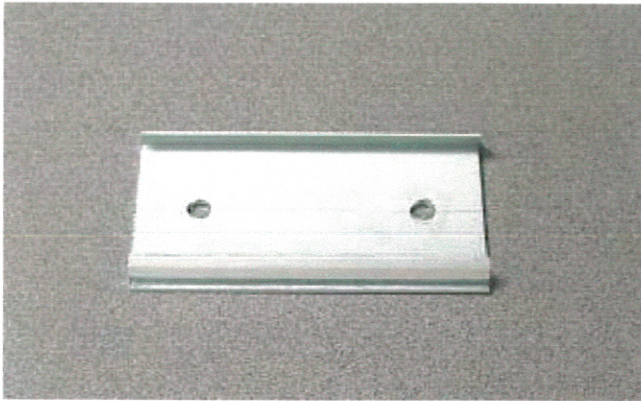
3. Slip the mounting channel onto the end of the radius wall where it will mount to your finished wall.

4. Position the radius wall in the exact location where you are going to install it. Make sure you push the wall into the mounting channel snugly. The mounting channel will accommodate a finished wall that is not plumb. On the finish surface, mark the outline of both sides of the base of the radius wall.



5. Mark the position of the mounting channel on the finished wall. Make sure that the mounting channel is plumb.

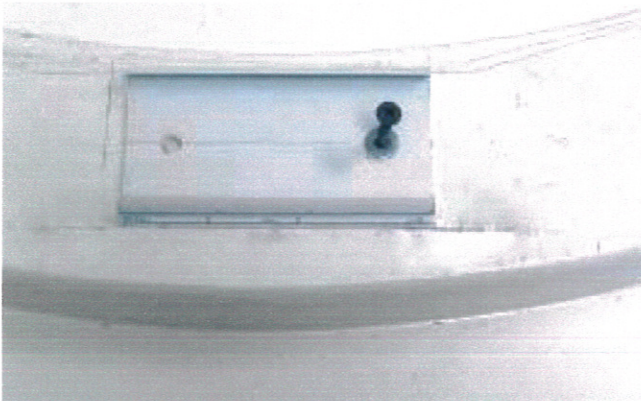




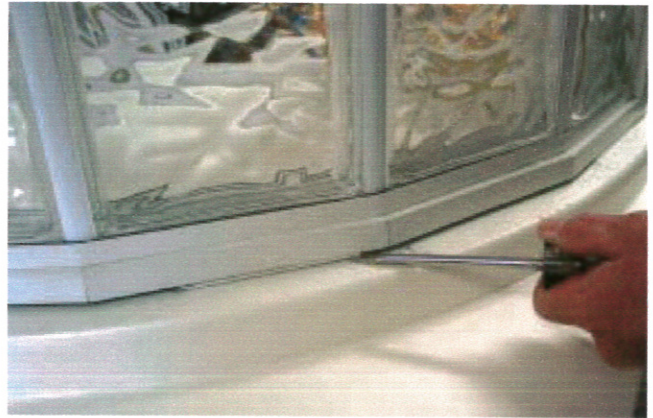
6. Drill two holes along the center of each piece of flat cap a little larger than the shaft of the screw you will be using.



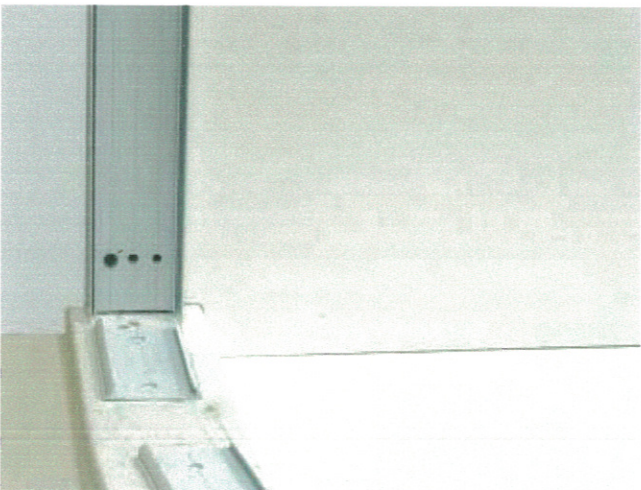
9. Slide the radius wall into the mounting channel and set it on top of the flat cap.



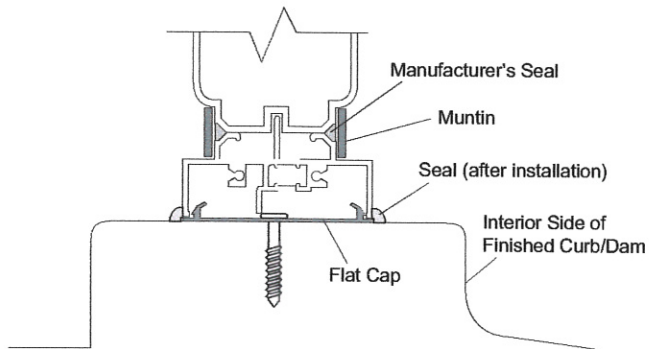
7. Using the outline on the finished surface as a guide, position the pieces of aluminum flat cap with the flanges pointing up. Fasten the caps to the surface with non-corrosive screws and washers. The screws should be snug, but still allow the flat cap to slide with a bit of effort.



10. Rather than push down the radius wall completely onto the flat caps, use a stiff putty knife or small pry bar to work the flat caps up into the radius wall. Make sure you have the flat caps attached on both sides of the radius.



8. Using the marks on your finished wall, secure the mounting channel to the finished wall.



11. There will be 1/16-inch high gaps between the finish surface and the bottom of the radius wall. If the radius wall is being used as a shower wall, apply a bead of caulk along the base of the radius wall. Also apply caulk along the joints where the radius wall slides into the mounting channel and where the channel meets the finished wall. DO NOT apply sealant along the muntin bars. The blocks are completely sealed to the frame at the factory.